



PORTLAND'5
KELLER
AUDITORIUM

Technical Information

1111 SW Broadway
Antoinette Hatfield Hall
Portland, OR 97205-2913
Main: 503-248-4335
Fax: 503-796-6507

production@portland5.com

Please Note:

The Keller Auditorium does not have a standard “house hang” installed for lighting, sound or soft goods. The configuration of these elements are arranged per event.

Although every effort has been made to accurately reflect the equipment available, some equipment may not be available at the time of your performance. Use of some equipment may result in additional costs.

TABLE OF CONTENTS

General Information.....	3
Management	7
Load-In Area.....	9
Carpentry.....	11
Lighting.....	15
Sound and Video.....	18
Props	24
Wardrobe.....	26

ATTACHMENTS

Map of Theater Location	A
Ground Plan	B
Section.....	C
Line Set Schedule	D
Photos of Stage and House.....	E
Seating Chart.....	F
FOH Mix Position Detail	G
Policies	H

General Information

Address

Keller Auditorium*
222 SW Clay Street (between SW 2nd and 3rd Avenues)
Portland, OR 97201-5812

*Please note the Keller Auditorium is not always open to receive packages and/or mail. We encourage senders to use the mailing address at our Administrative Offices, providing the name of the event on the parcel:

Mailing Address

(Name of Event) c/o Portland'5
1111 SW Broadway
Portland, Oregon 97205-2913

Time Zone

Oregon is in the Pacific Time Zone (UTC/GMT -8) and observes Daylight Savings Time.

Event and Production Services (Back of House and Front of House)

To reach an Event Production Manager, please use the general email address found below for all inquiries: production@portland5.com

Assistant Director Event & Production Services
Catherine Walsh
503-796-6519
CatherineWalsh@portland5.com

Programming and Booking

Director of Booking and Sales
Heather Wilton
503-274-6568
HeatherWilton@portland5.com

Box Office

Director of Ticket Services
Stephanie Viegas Dias
503-274-6598
StephanieViegasDias@portland5.com

Catering

General Manager, Levy
Dave Woodman
503-731-7952
Dwoodman@levyrestaurants.com

Area Hotels

The Hotel Zags

515 SW Clay St.
Portland, OR 97201
503.484.1084
www.thehotelzags.com

The Heathman Hotel

1001 SW Broadway
Portland, OR 97205
503.241.4100 or 800.551.0011
www.heathmanhotel.com

Hotel Vance

1455 SW Broadway
Portland, OR 97201
503.334.2167
hotelvance.com

Portland Paramount Hotel

808 SW Taylor St.
Portland, Oregon 97205
503.223.9900
www.portlandparamount.com

Portland Marriott Downtown Waterfront

1401 SW Naito Pkwy
Portland, OR 97201
503.226.7600
marriott.com

Taxi Service

Taxis are typically available at the front of the building during events. Stage door attendants can also call cabs. Downtown Portland is also well served by ride share companies.

Restaurants

ArtBar and Bistro

Located in Antoinette Hatfield Hall
1111 SW Broadway
Portland, OR 97205
503-432-2905
portland5.com/artbar

Higgins

1239 SW Broadway
Portland, OR 97205
503-222-9070
higginsportland.com

Southpark Seafood

901 SW Salmon St.
Portland, OR 97205
503-326-1300
southparkseafood.com

Swank Restaurant,

Swine Moonshine & Whisky Bar

Located in the Paramount Hotel
808 SW Taylor St.
Portland, OR 97205
503-943-5844
swankandswine.com

Shigezo

910 SW Salmon St.
Portland, OR 97205
503-688-5202
shigezo-pdx.com

Fogo de Chao Brazilian Steakhouse

930 SW 6th Ave.
Portland, OR 97204
503-241-0900
fogodechao.com

Laundry

Washers and dryers: Three washers and three dryers are available in room 52, 5th floor Dressing Room Tower

Dry Cleaning

Bee Dry Cleaners
1026 SW Salmon St.
Portland, OR 97205
503-277-1144

Auditorium Cleaners
128 SW Clay St.
Portland, OR 97201
503-222-2133

Travel Directions

From the North (I-5 South or I-84 West): Follow I-5 South to the “City Center/Oregon City” exit. Follow “City Center” signs. After crossing the Morrison Bridge, follow SW Washington to 3rd Avenue. Turn left on 3rd Avenue. Go 10 blocks to SW Clay Street. Keller Auditorium is on the left.

From the South (I-5 North): Follow I-5 to Naito Parkway exit. Follow signs to Naito Parkway. Cross Naito Parkway and continue three blocks to SW 3rd Avenue. Keller Auditorium is on the left.

From the East (Highway 26 West or Highway 99 West/McLoughlin Boulevard): Cross the Ross Island Bridge and follow “Highway 26/Naito Parkway” signs. Turn right onto Naito Parkway and follow to SW Clay Street. Continue 3 blocks to SW 3rd Street. Keller Auditorium is on the left.

From the West (Highway 26 East, “Sunset Highway”): Choose the center lane upon approaching the Vista Ridge Tunnel. Take the “Market Street/City Center” exit after exiting the tunnel (center lane). Continue on SW Market to 3rd Avenue. Keller Auditorium is on the left.

Parking

Production and Talent Parking: Limited parking spaces for loading/unloading may be coordinated with the Production Department. Portland’5 does not have a parking lot or arrangements for reduced parking prices with any surrounding lots.

Long-Term Truck Parking: Portland traffic regulations prohibit overnight curbside parking. The Production Department can provide information about long-term parking options.

Accessibility

Wheelchair accessible seats available at the rear of Orchestra level and on Box level.

Assistive Listening Devices are available from Coat Check for every event.

Audio Description, Captioning and American Sign Language Interpretation are available upon request. Please coordinate with the Box Office.

Emergency Numbers:

ALL EMERGENCIES – 911, OR 9-911 FROM INSIDE PHONE LINES

Fire Non-Emergency: 503-823-3333

Police Non-Emergency: 503-823-3333

Ambulance: 911

Hospital Emergency Room

Legacy Good Samaritan Medical Center
1015 NW 22nd Ave
Portland, OR 97210
503-413-7711

Urgent Care Clinic

AFC Urgent Care
25 NW 23rd Pl
Portland, OR 97210
503-305-6262
afturgentcareportland.com

Chiropractic Clinic

City Chiropractic
806 SW Broadway
Portland, OR 97205
503-224-5911

Dental Clinic

Emergency Tooth Doctor
1505 SW Broadway
Portland, OR 97201
503-222-0090
emergencytoothdoctor.com

Management

Production Office/Promoter Room

Stage level, offstage right, phone and internet hard lines available. Wireless internet available on stage, in house and lobby. [Additional costs may apply]

Green Room

Green Room is offstage right, four steps below stage level, is 23' 5" (7.14m) x 20' 5" (6.22m) and can be accessed by stairs or ramp from SR hallways. Green Room has limited furniture available. Vending machines in basement.

Internet & Wifi Access

Internet [additional costs apply] & Wi-Fi access are available

Stage Manager's Console

Typical placement is DSR
Color FOH video monitor
2 B&W video monitors
Color video mirror of lighting cue stack
4-channel intercom
Audio monitor
Cue light switching for fly rail and orchestra pit

Rehearsal Room

1st Balcony level, SL, accessed by stairs offstage L or elevator from basement level (ramp from SL to basement). Elevator access is in slight public view. Rehearsal room dimensions are 38' (11.58m) x 45' (13.72m), with a maple floor. No mirrors or barres. 100A, 3-phase power with cam-lock connections is available on a circuit shared with the sound room. This room is also often used for backstage catering/hospitality.

Crews

Minimum call for stage crew is five Portland's Department Head Stagehands for four hours (Carpentry, Props, Fly, Lighting, and Sound), and must be present for all work on stage, including load-in, rehearsal, performance, and load-out. Stagehand break requirements include a 15-minute break in any call of 2.5 hours or more, and 1-hour meal break (unpaid) or ½-hour meal break (paid, meal provided) no later than five hours into a call. Please contact the Production Department for additional information.

Any event with a tractor-trailer requires traffic control flaggers and special permitting which are added costs. Contact a Production Supervisor for more details.

Additional Union Stage Labor available through IATSE Local 28, 503-295-2828 or coordinating through Production Department. These labor expenses can be passed through on final settlement.

Stage Accessibility

The stage is wheelchair accessible from the stage door and star dressing rooms, and from the dressing tower via elevator. The stage is wheelchair accessible from the auditorium orchestra level via service hallways SL and SR.

Policies

See Attachment H: Policies



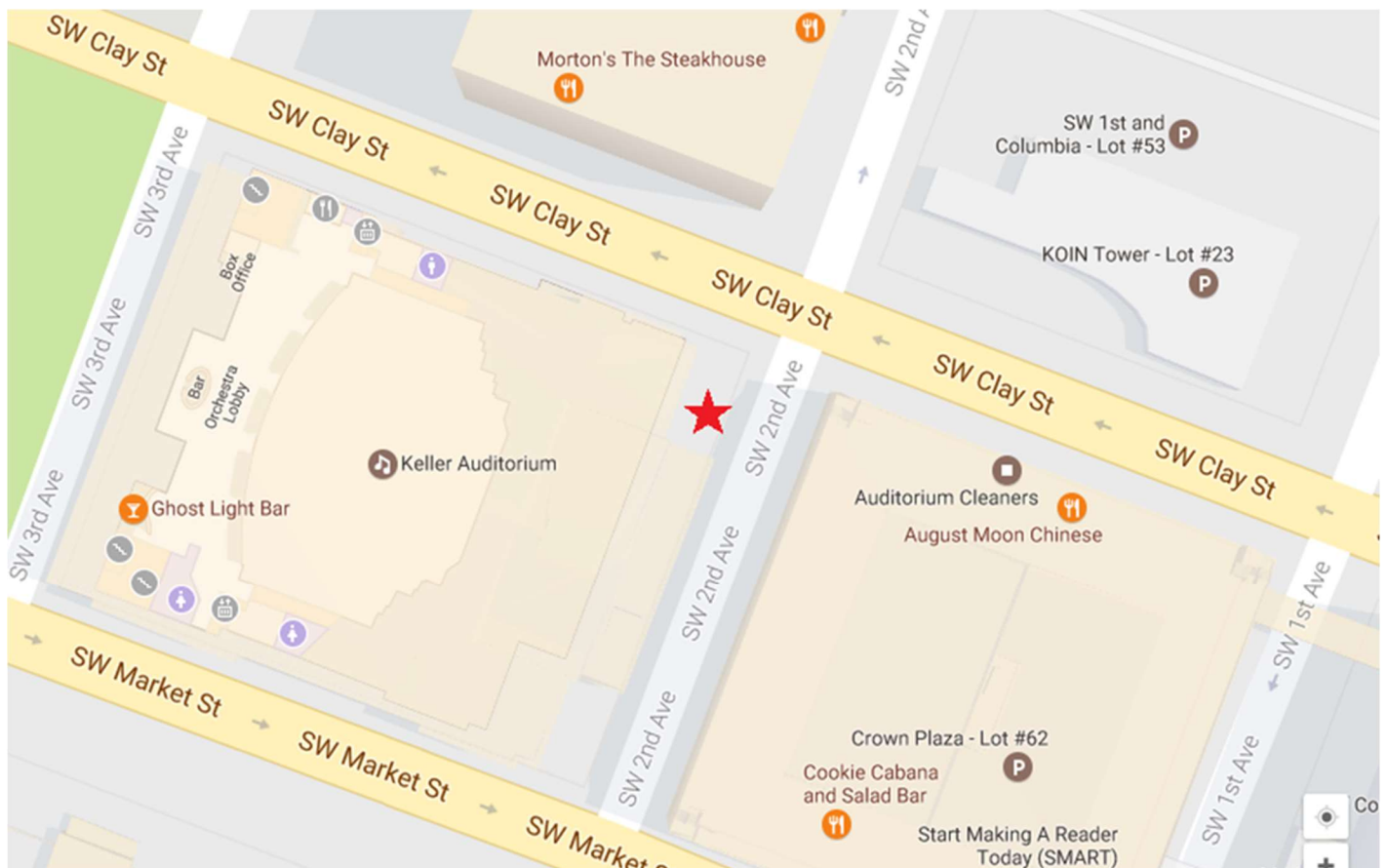
Load-In Area

Location

The loading dock is located at the intersection of SW 2nd Avenue and SW Clay streets, on the Clay Street side of the building, NE corner of the block.

Map

[Click to view in browser.](#)



Dimensions and Description

The truck dock is 23' (7.01m) W and 30' (9.14m) L and accommodates up to two 53' trailers at a 3% / 7° decline from street level. The loading dock height is 30" (0.76m), and the exterior dock area is approximately 7' (2.13m) deep and 23' (7.01m) wide. The overhead loading door is 10' (3.05m) H x 14' (4.27m) W. Inside the loading door is a ramp 19' (5.79m) W and 11' (3.35m) L leading down 12" (0.30m) to stage level. The slope of the ramp is approximately 3% / 7°. Tractors may not be left attached to trailers for any extended period of time.



Carpentry

Stage Dimensions

Note: US/DS measurement are taken from the Plaster Line (PL), which is the upstage edge of the proscenium. Center Line (CL) is the center of the proscenium opening. The Fire Curtain Line shall not be obstructed.

Proscenium Opening: 59'-11" (18.28m) W x 29'-10" (9.09m) H

Stage Depth: PL to DS edge of pilaster on US wall (i.e. usable space): 42'-2" (12.86m)

PL to US wall: 43'-6" (13.26m)

PL to US edge of hardwood deck: 45'-1" (13.74m) PL to US edge of Smoke Pocket: 6.5" (0.17m)

PL to US edge of Fire Curtain (scored ref line on deck): 5.25" (0.13m) PL to DS apron edge: 5'-6.75" (1.7m)

PL to DS edge of pit elevator at CL: 16'-2.75" (4.95m) PL to DS edge of pit elevator at SL/SR: 6'-11.5" (2.12m)

Stage Width: SL Wall to SR Fly Rail: 104'-3"

(31.78m) CL to SL wall: 53'-7.5" (16.34m)

CL to SL mid bridge: 47'-5" (14.55m)

SL Wing Space (SL proscenium edge to SL wall): 23'-8" (7.21m) CL to SR rail: 50'-7.5" (15.44m)

CL to SR mid bridge: 41'-9" (12.73m)

SR Wing Space (SR proscenium edge to SR rail): 20'-8" (6.3m)

*Permanent obstruction - There is a concrete ramp on SL that leads to an offstage storage area. This ramp extends from the SL wall 8' (2.44m). It is 11' (3.35m) wide and is 8'11" (2.72m) US of the Plaster Line.

Orchestra Pit Elevator: 55'-6" (16.92m) W @ US edge x 10'-7" (3.23m) D @

CL CL to SL/SR pit edge: 27'-9" (8.46m)

Standard elevator travel (used by most shows): 7'-8" (2.34m) Ultimate elevator travel: 8'-11" (2.72m)

*Space available under stage when pit is down: 8' (2.44m) US of Apron Line x 64' (19.5m) W

*The standard elevator travel distance makes the pit level with the 16" risers lining the entirety of the space below the stage.

*Hydraulic, Operated from pendant DSR.

Vertical dimensions:

Grid Height: 78'-6" (23.93m)

*Height to structural steel varies slightly across 5 major US/DS beams following roofline (highest at center); 3 major beams SL/SR at approx. 88' (26.82m)

Stage Height: 3'-5.5" (1.05m) from House floor.

Slab loading dock and concrete storage area US of hardwood deck: 83' (25.3m) W x 18'-9" (5.71m) D.

Stage Floor

Screws and nails are allowed in the stage floor. Any significant damage must be repaired after use.

Seating

Orchestra Level	1850, 32 of which are wheelchair accessible
Box Level	188
1 st Balcony	425
2 nd Balcony	529
Total Seating Capacity	2992
Pit Seats (by request)	42
Total Using Pit Seats	3034

Seating Chart: See Attachment F

House Draperies (Goods)

House Curtain	Red banjo cloth with black backing 6" (15cm) US of reference line Guillotine only, manual from SR [not part of lock rail]
Valance	None

Legs	10	35' (10.67m) H x 21' (6.40m) W (hung on L.S. No. 76 as BOD)
	2	35' (10.67m) H x 15' (4.57m) W (portal masking)
Borders	5	12' (3.66m) H x 74' (22.56m) W
Tabs	4	31' (9.45m) H x 10' (3.05m) W (SR)
	4	40' (12.19m) H x 10' (3.05m) W (SL)
Blackout drop	1	35' (10.67m) H x 74' (22.56m) W
Blackout panels	4	35' (10.67m) H x 30' (9.14m) W can be used to make traveler (2 panels) or blackout drop (2-3 panels)
White filled scrim (bounce only - has defects)	1	35' (10.67m) H x 70' (21.34m) W

Stacking Motors – One stacking motor USR and one USL

Line Set Data

Line Set Schedule: See Attachment D

Working Height of Battens High trim = 71' 10" (21.89m), Low trim = 4' 0" (1.22m)

Battens 74' (22.56m) / 1 ½" ID sch80 steel pipe
6 lift lines per set
loft blocks mounted upright on grid
sheave wells are @ CL, and R & L of CL @ 7' (2.13m), 14' (4.27m), 21' (6.40m), 28' (8.53m), and 34' (10.36m)

Type 76 single-purchase, T-track
manual operation SR at stage level

Main curtain is single purchase, manually operated from SR stage level, not part of lock rail

Capacity 1500 lbs. over pipe weight

Available Weight ~24,000lbs.

Loading Galleries 78' 6" (23.93m), and 36' 2" (11.02m) SR
accessed by spiral staircase USR, ladders, and elevator to staircase SR

Pin Rails 1 @ 40' 2" (12.24m), and 1 @ 38' 2" (11.63m) SR
43' 8" (13.31m) SL

FOH Rigging Points (2,000 lbs WLL) 21' (6.4m) from PL, at C and 18' (5.5m) L and R
40' (12.2m) from PL, at C and 12' (3.7m) L and R
(request chart for all points)

Support Areas

Crossover: Crossover US through staging area aka "the Slab" behind US wall.

Access: Stage is accessed from Green Room, Production Office, Star Dressing Rooms, and Dressing Tower through a single door DSR. The scenery dock/staging area (aka "the Slab" US may be used as a crossover. There is no direct access from the dressing rooms to SL. Dressing Tower and orchestra pit are accessed by stairs or elevator offstage right. FOH sound and lighting positions accessed via service hallway house left or lobby elevators. Spot booth accessed by FOH elevator and stairs on Balcony Level 2. Box and balcony lighting and video positions accessed by FOH elevator from the basement (ramp from stage level).

Storage: Dead case storage available in the basement.

Staging and props area offstage SL, approximately 1100ft² (102.2m²), with an unobstructed area of approximately 30' (9.14m) x 30' (9.14m).

US staging area and crossover immediately inside the loading dock door, 80' (24.38m) W, 19' (5.79m) D, and 34' 9" (10.59m) clear height.

Shop Area: There is a small carpentry and metals shop in the basement of the building which can be used for minor repairs.

Orchestra Locker Rooms/Lounge: Located on basement level SR. See "Wardrobe".

Notes: A crew lounge is available in the SL staging area.

Various lengths of bottom pipe available.

Lighting

Power

Company Switches: 120/208V, 3-phase, cam connectors or bare tails, with reversed ground and neutral. [additional cost]

2	400A USR, stage level
1	400A DSR dimmer room, 10' above stage level
1	200A DSR dimmer room, 10' above stage level
1	200A DSL, isolated ground

Shore Power: We have three hook ups to shore power for buses on Clay Street.

Dimmers

Dimmer-per-circuit; ETC 288 @ 2.4kW

Lighting Consoles

ETC Eos 4K; ETC Ion 3K (backup and programming); iRFR available. Eos located in either dimmer room or control area at rear of house. Ion may be moved into house for tech as well.

Console Locations

House control room offstage down stage right, 10ft. above stage level.

Touring console location at rear of orchestra level, section C, under balcony. 250' snake run to DSR. Seat kills required. Must be arranged in advance with Production Department.

See Attachment G: FOH Mix Position, for more details

Houselights

Houselights are controlled through console, or via work light panels at various locations.

Circuits

Dimmer per circuit. 96- 20A circuits FOH, fixed receptacles. 150- 20A circuits on mid bridges, accessed by Socapex drops, 28- 20A circuits in dimmer room DSR, 10ft. above stage level.

3- 50A, 120v convenience circuits available on the balcony rail, switchable from the dimmer room. Twist lock w/Edison breakouts.

16- 20A receptacles on stage, some switchable from the dimmer room.

Front of House Lighting Positions

FOH positions include ceiling slots, cove slots, box booms, balcony rail, and apron booms.

House Plot

There is no "House Hang" lighting plot in the Keller Auditorium.

Equipment Inventory

Instruments

6	ETC 5°	Source 4 (lens tubes only)
2	ETC 10°	Source 4 (lens tubes only)
30	ETC 10°	Source 4 750W (hung FOH Coves + Boxes)
12	ETC 14°	Source 4 (lens tube only)
50	ETC 19°	Source 4 575W
15	ETC 19°	Source 4 750W (all hung FOH)
80	ETC 26°	Source 4 575W
50	ETC 36°	Source 4 575W
6	ETC 50°	Source 4 (lens tube only)
30	ETC PAR	Source 4 750W (standard lens kit)
50	Altman PAR64, MFL (other lamps by arrangement)	
14	3-cell Colortran Far Cycs 1kW/cell	
24	3-circuit 8' PAR 56 strip lights 500W/cell (4 cells/circuit)	

Follow Spots

4	Lycian 1295 XLT (3kW Xenon) [additional cost]
---	---

Hardware

	Various long lengths of pipes and side arms
10	irises
20	top hats (6.25")
20	half-hats (6.25")
12	barn doors (PAR size)
12	donuts, both 6 ¼" and 7 ½" sizes
20	A and B sized template/gobo holders

Cable, 6-Cir. Socapex

4	25' (7.62m)
12	50' (15.24m)
11	75' (22.86m)
4	100' (30.48m)
28	fan-outs, 20A GSP
4	break-ins, 20A GSP

Cable, single-circuit:

Various quantities of 20A GSP cables in lengths from 5' to 100', plus two-fers.

Lift and Ladders

1	Genie MEWP (AWP 40S), Max Working Height = 46' 4' (14.02m)
1	Genie MEWP (IWP-30S), Max Working Height = 35' 6' (10.82m)
1	12' (3.65m) ladder
1	10' (3.05m) ladder
2	8' (2.44m) ladders

- 3 6' (1.83m) ladders
- 2 4' (1.21m) ladders

Film, Video, and Projection Equipment

There is no electronic projection or video equipment in-house. Projector shelves (for projectors up to 70 lbs) are available which can be positioned on the balcony rail. These may also be used for “yoking out” intelligent lighting fixtures on the balcony rail. Eight shelves available, in two different types depending on size and need of projector shelf. Contact Production for more details if needed.

Projection distances, to PL @ C, 6' (1.83m) above stage)

Balcony rail C	94' / 7.5 degrees
Second balcony rail position	116' 9"
Projection booth window	145' 8"
Ceiling slots	86' / 35 degrees
Cove slots	52' / 53 degrees
Box Boom #1	43' / 10 degrees
Box Boom #2	56' / 20 degrees
Box Boom #3	90' / 45 degrees
Orchestra first row	23'
Orchestra last row	116'

Haze, Fog, Atmosphericics

Atmosphericics are permitted for use in the Keller Auditorium. Please advise Production during advance and the Dept. Head Stagehand Electrician prior to utilizing in physical space.

Other

Clip lights, tech table lights and music stand lights available

FOH ceiling/cove fixtures are not moveable

Various lengths of Sch40 pipe available.

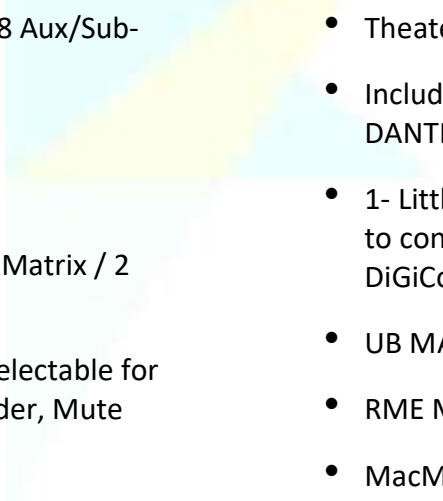
Sound and Video

Power

- Company Switch: 1 - 200A, 120/208V, 3-phase, cam connectors or bare tails, with reversed ground and neutral. — DSL, isolated ground
- 1 - 100A in Audio Control room, isolated ground - Camlock
- 1 - 50A in Audio Control room, isolated ground - Lugs only
- 3- 30A outlets in Audio Control room. (1 wired to FOH mix, 1 for House P.A. when used). (ISO Transformer Sound power)

Sound Consoles

DiGiCo SD12T <https://digico.biz/consoles/sd1296>

- 
- 96 Input Channels / 48 Aux/Sub-Group Busses
 - 26 faders
 - LR/LCR Master Bus
 - 12 x 8 Full Processing Matrix / 2 Solo
 - Control Groups: 12, Selectable for VCA-style, Moving Fader, Mute Group
 - Dynamic Equalizers, DiGiTuBes and Multiband Compressors available on all channels
 - 12 Digital FX / 16 Graphic Equalizers
 - 48/96kHz Sample Rate
 - Theater Software
 - Includes DMI-MADI-C and DMI-DANTE64@96
 - 1- Little Red Box (use to share D2 racks to connect to another Cat5-MADI DiGiCo SD Console) (48k only w/ 1 LRB)
 - UB MADI interface
 - RME MADIFace interface
 - MacMini Recording Computer
 - Reaper Commercial Recording Software
 - Audacity Recording Software
 - QLab 3 and 4 available (*client must purchase day licenses*)

I/O:

2 x DiGiCo D2 Racks

- <https://digico.biz/racks/d2-rack/>
- 48 inputs / 16 outputs / 2 AES Cards (8 ch each)

- One rack available DSL or in Orchestra pit (No AES)
- One rack permanently installed in Audio Control room

External Gear:

Eventide DSP7000 Reverb

<https://www.eventideaudio.com/rackmount/dsp7000/>

P.A.

Venue house and backstage PA DSP are managed via Q-Sys Core 501i's and a Meyer Galileo Galaxy controller.

Permanent House Speakers:

- 5 - JBL 2-way clusters spaced above proscenium
- 4 - Meyer UP Junior Out-fills Mounted for Box fill/Orchestra fill, Left and Right
- 2- Meyer UPQ-D2 Speakers - Balcony Fills

Portable House Speakers:

- 4 - Meyer CQ2 self-powered reinforcement loudspeakers
 - 2 - Meyer PSW-2 self-powered reinforcement subwoofers
 - 8 - Meyer MM-4xp Front Fills
 - 4 - EV QRx 112/75 Monitors w/Flying Hardware
- https://products.electrovoice.com/binary/QRx-112_75-EDS.pdf

Amplifiers:

- 3 - QSC CX-Q 4K8
- 2 - QSC CX-Q 2K4

Microphones and Direct-In Boxes (DI's):

- | | |
|---|--|
| • 6 - Shure SM58 | • 5 - Crown PCC160 |
| • 6 - Shure SM57 | • 4 - EV PL20 |
| • 4 - Shure SM58S (1-perm. backstage page) | • 1 - AKG 4266 stereo mic |
| • 7 - Neuman KM184 | • 6 - Audio Technica 853a |
| • 6 - AKG 451 w/ Swivel heads/CK1/CK3/CK22 Capsules | • 1 - Radial USB Pro |
| • 2 - AKG 414 ups | • 2 - Radial JDI Duplex Stereo DI with Jensen Transformers |
| • 4 - Sennheiser 421 | • 2 - Klark Teknik DN100 Active DI Box |

- 2 - Stewart electronics ADB-1 Active Direct Box
- 2 - Furman ISO Patch Dual Transformer Isolator IP-2
- 2 Shure ULXS-4 Wireless Transmitters, 2x Beta58A Handhelds, 2 Lav packs.

Microphone Stands:

- 4 - Tabletop stands
- 7 - unistrut mount booms
- 2 - unistrut mounts DSL w/articulating booms for Antennae
- 4 - large base w/booms
- 2 - K&M Tall/Medium tripods w/booms
- 2 - K&M Short tripods w/booms
- 7 - Atlas Medium stands
- 2 - Atlas Short stands
- 6 - Atlas Tall boom stands chrome
- 3 - Atlas Tall stands chrome
- 5 - Tall stands black
- 2 - stereo bars (2 fixed, 3 adjustable)
- 6 - gooseneck attachments (chrome and black varied length)
- 8 - Doughnut mic stand sandbags

Cables:

Various adapters and transformers.

Various lengths (20' and under) 1/4" & TRS cables

XLR

- | | | |
|------------|---------------|------------|
| • 1'-5' —9 | • 20'-25' —10 | • 75' — 1 |
| • 10' —19 | • 30' — 17 | • 80' — 1 |
| • 15' —16 | • 50' — 1 | • 100' — 5 |

XLR 4-Pair

- | | |
|-----------------|-----------|
| • 20' — 2 | • 70' — 3 |
| • 55' — 1 (5ch) | • 60' — 1 |

12/3 Edison Quads:

- | | |
|----------|-----------|
| • 2' — 3 | • 10' — 3 |
| • 5' — 3 | • 25' — 3 |

NL4

- 5' — 5
- 10' — 10
- 25' — 6
- 50' — 2
- 75' — 2
- Barrels — 8

COM:

(4CH CLEAR-COM AVAILABLE THROUGHOUT THE VENUE.)

- 8 - 4ch. Freespeak II wireless clearcom
- 2 - 4ch. base stations (for tech table and SM call desk)
- 6 - single channel belt packs
- 6 - dual channel belt packs
- 13 - single muff headsets
- 2 - double muff headsets
- **Spot-booth:**
 - 5 - dual channel belt packs with program
 - 5 - single muff headsets
- 6 - remote com stations
- 4 - phone handsets
- 5 - push-to-talk (CB) mics
- 2 - flasher/beacons

Monitor/Paging System

- Stage monitors in Audio Control room, dressing rooms, green room, and offstage areas.
- Road Show Program, Program/Page, ALD feeds can be connected to the house system in four locations: DSL, DSR, FOH or in Audio Control room.
- Backstage Page mic always available DSR.

Hearing Assist System

- Listen Technologies Intelligent DSP RF Receivers (72 MHz) model LR-4200-072 and Headsets available at Coat Check in Main Lobby.

Video Monitoring

- Multiview monitoring available at SM Station
- FOH shot available in Green Room

Cameras

- 1 – Fixed, FOH color camera, mounted on 2nd balcony railing, with distribution to backstage.
- Digital Panasonic PTZ cameras over SDI with distribution to SM console
- 1 - B&W camera for conductor with distribution to stage.

Video Monitors

- 1 - Sony 20" color
- 2 - Sony 25" color
- 1 - Panasonic 8" B&W

Other Gear

- 3 - 10/5 Stinger breakout boxes
- 2 - Horizon PB-8 ISO Press Box

House Mix Position

Located at the rear of Orchestra Section C, rows DD, EE, and FF. This area can accommodate both sound and lighting consoles. If not in use, it may be converted to seating and opened for sale at an additional cost. Coordinate with Production Department prior to show day.

FOH Mix Position- See Attachment G for more details.

Other Info:

- 250' snake run from House Mix position to SL. (Runs around balcony, requires 3+ additional hands to run/strike snake)
- SM Console
 - Video Monitors:
 - Color FOH
 - 2x Side PTZ
 - Conductor (when pit is in use)
 - Lighting Cue-Stack
 - Cue-Light controls
 - COM base station control
 - Show Audio Feed
 - VOG
 - Backstage page

- 3- XLR “Dry lines” to Spot booth patchable DSL, DSR, or at FOH.
- Wireless microphones may be available for extra charge by prior arrangement. They must be reserved in advance and are subject to prior booking.



Props

Orchestra Pit

Elevator: Pit capacity is approximately 70 musicians, using both sections of pit elevator. 55' 6" W (16.92m), 10' 7" (3.23m) D @ CL, 1' 5" (0.43m) D @ SL/SR, adjustable to stage, seating, or orchestra pit level, or anywhere in between. Typical pit position for orchestra is -7' 8" (2.34m). Maximum travel is 8' 11" (2.72m). Pit wall sections installed whenever elevator is positioned below seating level.

Pit riser: Raises floor of pit upstage of elevators to playing height and may be removed only by prior arrangement with Production Department. 8' (2.44m) D x 64' (19.51m) W x 16" (0.41m) H.

Orchestra Lockers and Lounge: Located on basement level, SR side. See "Wardrobe" section for further detail.

Music Chairs: 135 musician chairs, 80 in pit area, 55 in rehearsal hall typically.

Stands: 95 music stands, various types.

Stand Lights: 50+ LED stand lights

Pianos: A Steinway D (9') Grand and a Steinway B (7') Grand are available to rent. Tunings can be arranged through the Production Department upon request [additional cost].

FOH Step Units

Two sets of FOH steps units are available with prior arrangement. One set is to be used when the orchestra pit elevator is at house level. These two units can be placed along the front edge of the stage, anywhere in between the proscenium opening. If audience members/patrons will use the stairs, handrails are mandatory and may cause slight view obstruction. If pit seats are being sold, seat kills will be necessary if FOH steps units are also used. The other set of step units are used when the orchestra pit elevator is at stage level. These units are only 21" wide and are placed on the offstage edge of the orchestra pit. Handrails are non-removable.

Orchestra Shell

Back wall only available, no ceiling or side shell pieces.

Choral Risers

None available

Platforms

Decks	6	4'x8' (1.22m x 2.44m), hard plastic top
	2	4'x8' (1.22m x 2.44m), carpeted top

Legs (pipe style)	32	16" (0.41m)
	16	12" (0.30m)
	8	8" (0.20m)

Dance Floor

Black marley, 6 rolls, 6' 7" (2.01m) W x 60' (18.29m) L. Tape included. [Additional cost, client must transport from and back to Antoinette Hatfield Hall where it is stored, 9 city blocks away.]

Lecterns

One available by prior arrangement

Other Equipment

6 - 8', 6 – 6' and 4 – 4' folding tables (by prior arrangement)

100- plastic stacking chairs (located in dressing tower dressing rooms, 30-40 available at stage level)

Dollies, hand trucks, and truck dock plate



Wardrobe

Dressing Rooms

Star dressing rooms at stage level, accessed from SR. All other dressing rooms accessed by elevator or stairs SR. All dressing rooms have mirrors, counters, makeup lights, and chairs. Non-chorus rooms have wall racks for hanging costumes.

Please note: Many Dressing Room Tower doors are 28 ½" wide. Most standard road cases will not fit.

Lower level (basement): Orchestra Lounge is 38' (11.58m) x 10' (3.04m), accessed by stairs or elevator from SR, or directly from the orchestra pit if in use. This room has drink and snack machines. There is also a large room 15' (4.57m) x 13' (3.96m) labelled Room 3. This room is frequently used as a production office, orchestra lock-up, or storage. Additionally, there are two orchestra dressing rooms, equipped with restrooms, showers and lockers.

1st Floor (stage level): 2 Star dressing rooms with furnished lounge, dressing room, and private bathroom with showers.

2nd Floor, Dressing Tower

Rm #	Person(s)	Sink(s)	Toilet(s)	Shower(s)
20	24	3	2	2/2 shared
21	2	1	1	2/2 shared
22	2	1	1	2/2 shared
23	2	1	1	2/2 shared
25	2	1	1	2/2 shared

3rd Floor, Dressing Tower

Rm #	Person(s)	Sink(s)	Toilet(s)	Shower(s)
30	19	2	2	2/1 shared
31	3-4	1	1	2/1 shared
32	2	1	1	2/1 shared
33	2	1	1	2/1 shared
35	1-2	1	0	2/1 shared

4th Floor, Dressing Tower

Rm #	Person(s)	Sink(s)	Toilet(s)	Shower(s)
40	10-12	3	3 shared	2 shared
41	3	2	3 shared	2 shared
42	6	2	3 shared	2 shared
43	4	3	3 shared	2 shared

5th Floor, Dressing Tower

Rm #	Person(s)	Sink(s)	Toilet(s)	Shower(s)
50	10-12	3	3 shared	2 shared
51	2	2	3 shared	2 shared
53	4	3	3 shared	2 shared

Wardrobe Area

Wardrobe room on 5th floor of dressing tower, Room 50.

Irons: 1

Ironing Boards: 2

Steamers: 3 [additional cost]

Washers/Dryers: 3 washers & 3 dryers, 5th floor [additional cost]

Racks and Hangers: 10 rolling racks, no hangers provided.

Quick Change Booths

64' linear feet of 8' tall pipe and drape available from Prop Department with prior arrangement.
Eight hanging mirrors available.

Laundry

Washers and dryers: Three washers and three dryers are available in room 52, 5th floor
Dressing Room Tower

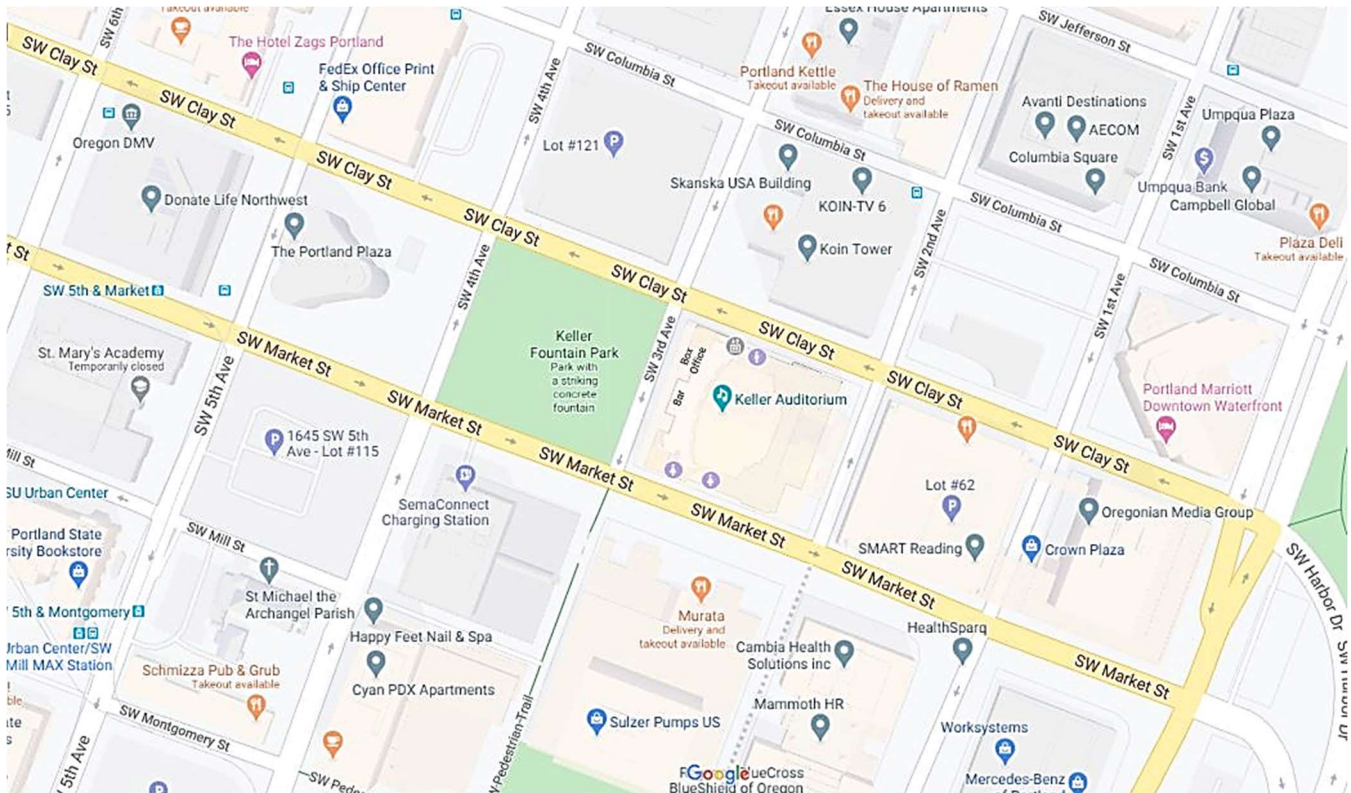
Dry Cleaning

Bee Dry Cleaners
1026 SW Salmon St.
Portland, OR 97205
503-277-1144

Auditorium Cleaners
128 SW Clay St
Portland, OR 97201
503-222-2133

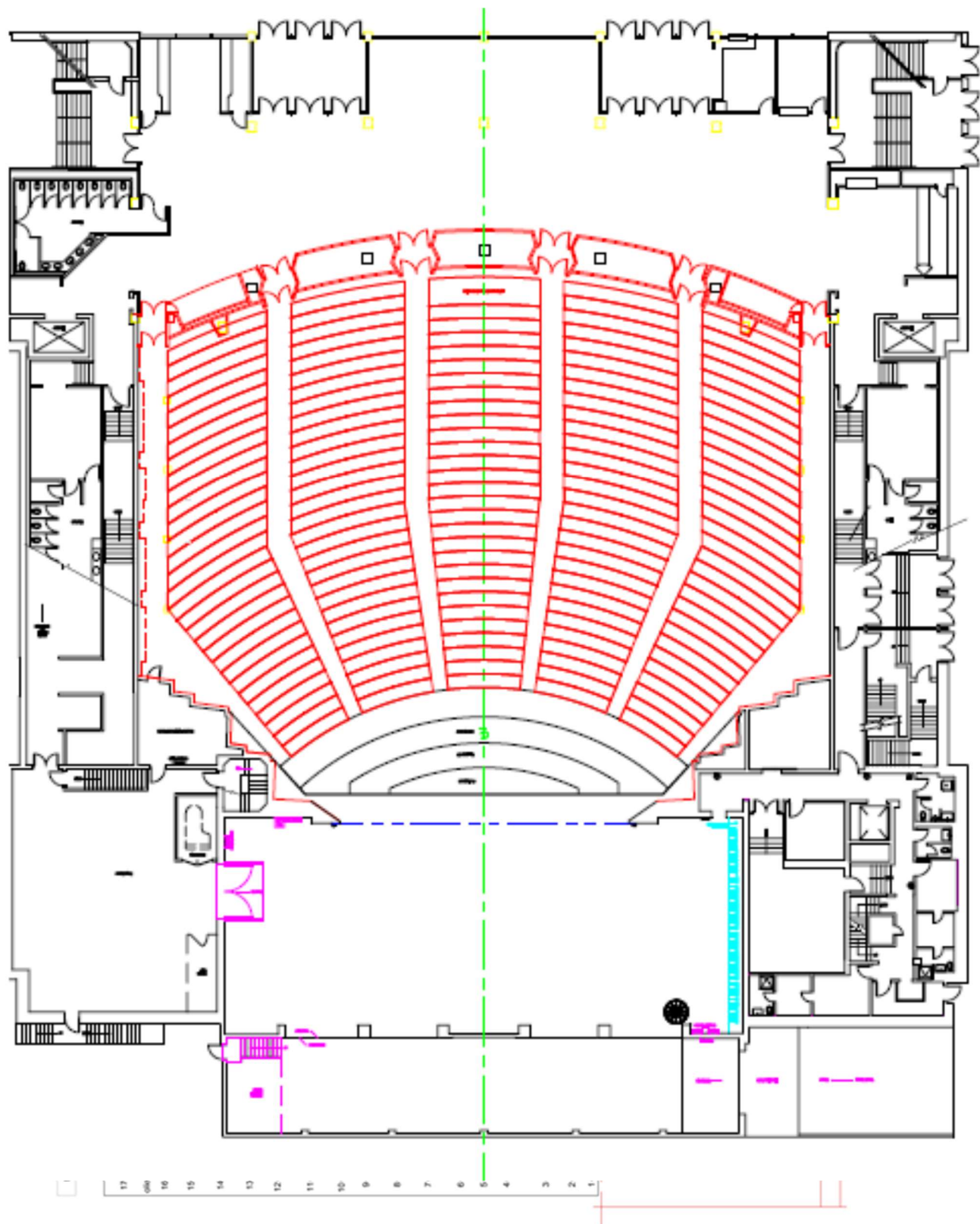
Attachment A: Map of Theater Location

[Click to view online.](#)



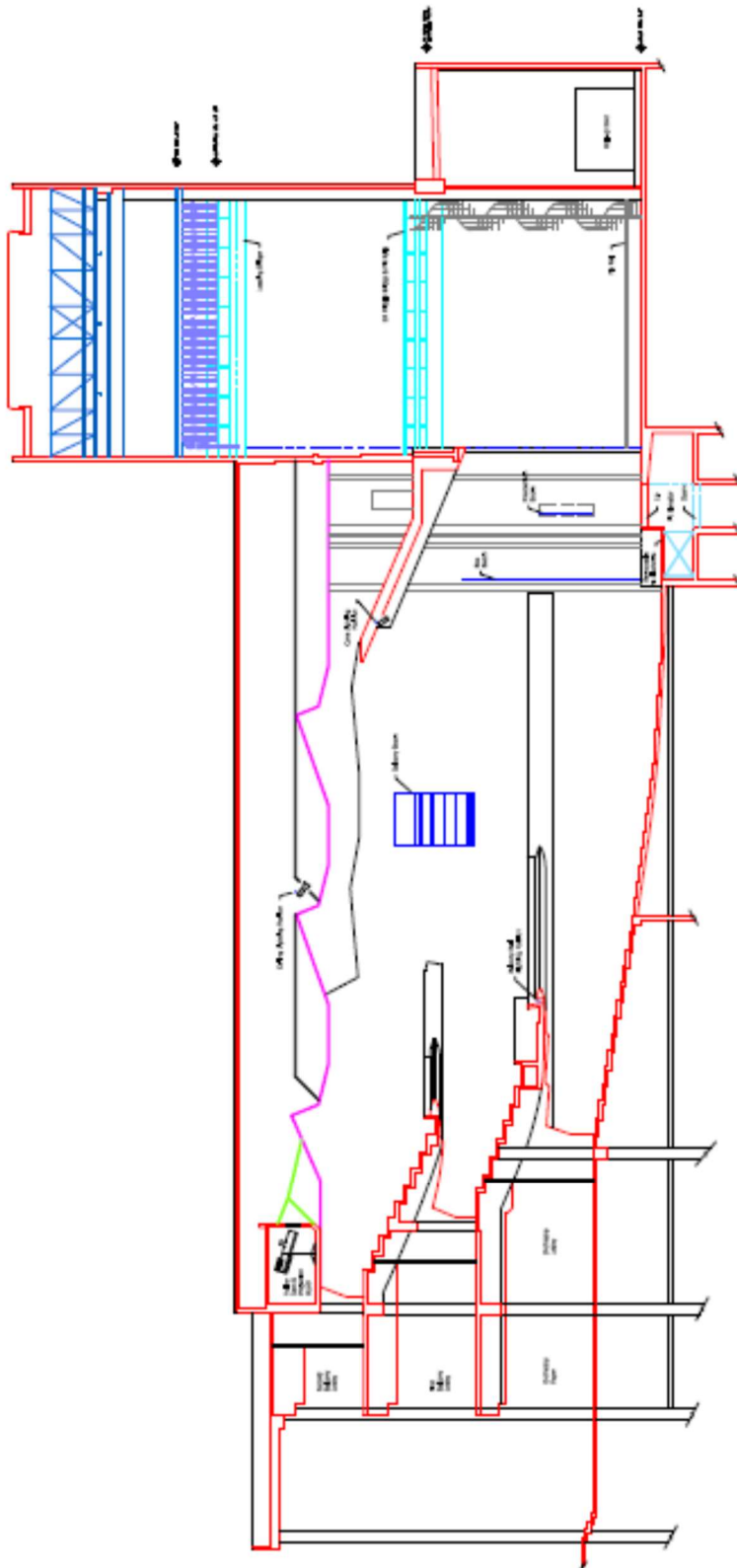
Attachment B: Ground Plan

Contact Production Department for full-sized drawing.



Attachment C: Section

Contact Production Department for full-sized drawing.



Attachment D: Line Set Schedule

Lineset	Distance	Notes
	-3" (7.6cm)	Plaster Line
	0' 0" (0.0m)	Fire Curtain
	0' 6" (0.15m)	Main Curtain
1	1' 0" (0.30m)	
2	1' 6" (0.46m)	
3	2' 0" (0.61m)	
4	2' 6" (0.76m)	
5	3' 0" (0.91m)	
6	3' 6" (1.07m)	
7	4' 0" (1.22m)	
8	4' 6" (1.37m)	
9	5' 0" (1.52m)	
10	5' 6" (1.68m)	
11	6' 0" (1.83m)	
12	6' 6" (1.98m)	
13	7' 0" (2.13m)	
14	7' 6" (2.29m)	
15	8' 0" (2.44m)	
16	8' 6" (2.59m)	
17	9' 0" (2.74m)	
18	9' 6" (2.90m)	
19	10' 0" (3.05m)	
20	11' 0" (3.35m)	
21	11' 6" (3.51m)	
22	12' 0" (3.66m)	
23	13' 0" (3.96m)	
24	13' 6" (4.11m)	
25	14' 0" (4.27m)	
26	14' 6" (4.42m)	
27	15' 0" (4.57m)	
28	15' 6" (4.72m)	
29	16' 0" (4.88m)	
30	16' 6" (5.03m)	
31	17' 0" (5.18m)	
32	17' 6" (5.33m)	
33	18' 0" (5.49m)	
34	18' 6" (5.64m)	
35	19' 0" (5.79m)	
36	19' 6" (5.94m)	
37	20' 0" (6.10m)	

Lineset	Distance	Notes
38	20' 6" (6.25m)	
39	21' 0" (6.40m)	
40	21' 6" (6.55m)	
41	22' 6" (6.86m)	
42	23' 0" (7.01m)	
43	23' 6" (7.16m)	
44	24' 0" (7.32m)	
45	24' 6" (7.47m)	
46	25' 0" (7.62m)	
47	25' 6" (7.77m)	
48	26' 0" (7.92m)	
49	26' 6" (8.08m)	
50	27' 0" (8.23m)	
51	27' 6" (8.38m)	
52	28' 0" (8.53m)	
53	28' 6" (8.69m)	
54	29' 0" (8.84m)	
55	29' 6" (8.99m)	
56	30' 0" (9.14m)	
57	30' 6" (9.30m)	
58	31' 0" (9.45m)	
59	31' 6" (9.60m)	
60	32' 0" (9.75m)	
61	33' 0" (10.06m)	
62	33' 6" (10.21m)	
63	34' 0" (10.36m)	
64	34' 6" (10.52m)	
65	35' 0" (10.67m)	
66	35' 6" (10.82m)	
67	36' 3" (11.05m)	
68	37' 0" (11.23m)	
69	37' 6" (11.43m)	
70	38' 0" (11.58m)	
71	38' 6" (11.73m)	
72	39' 0" (11.89m)	
73	39' 6" (12.04m)	
74	40' 0" (12.19m)	
75	40' 6" (12.34m)	
76	41' 0" (12.50m)	

Attachment E: Photos of Stage and House

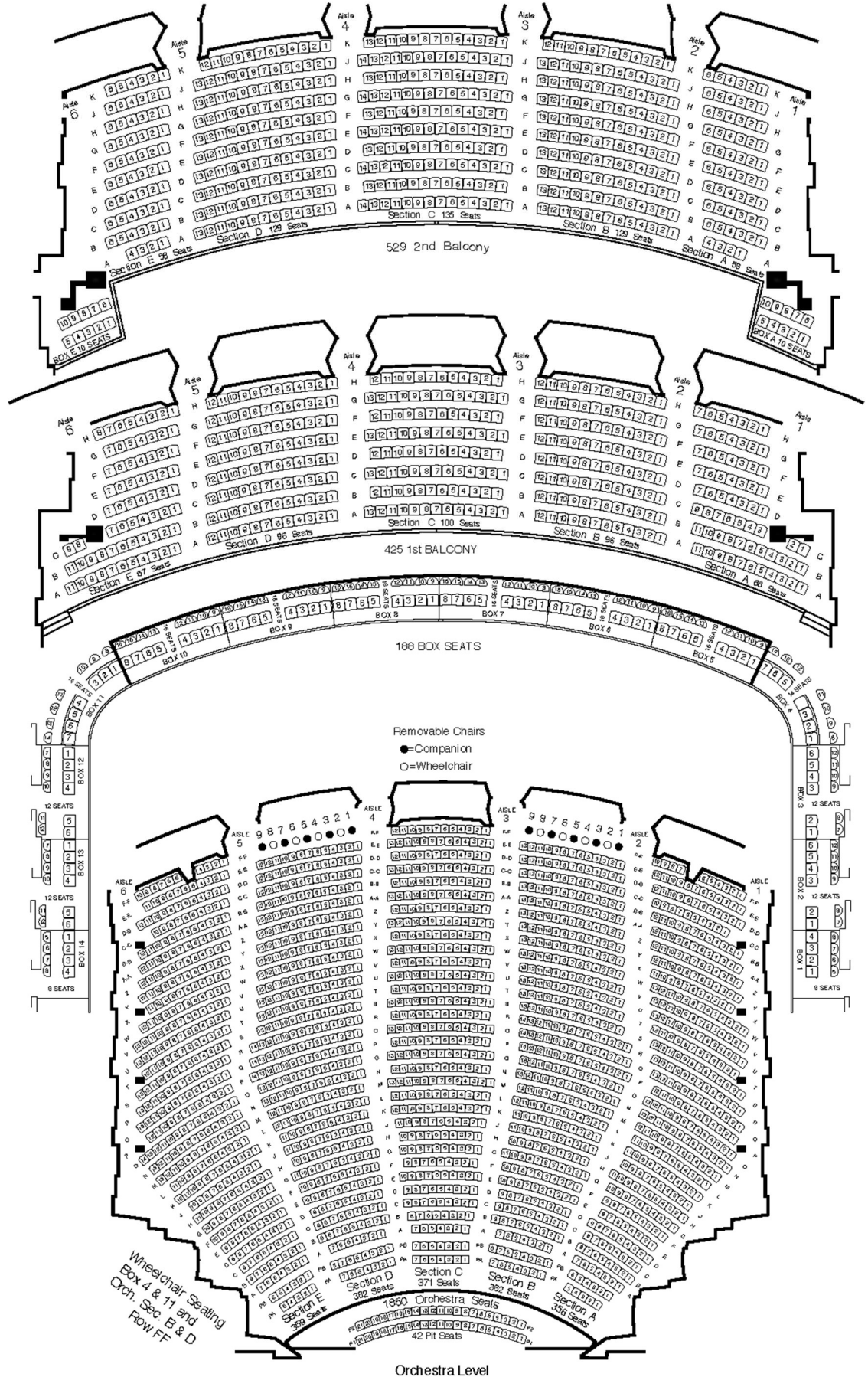


Attachment F: Seating Chart



PORTLAND'S
**KELLER
AUDITORIUM**

2992 Capacity
(with pits 3034)



Attachment G: FOH Mix Position

Location

Back of the center Orchestra Seating Area, Section C, Rows DD, EE, and FF; 3 rows 37 removable seats in total.

Dimensions

Total area is approximately 22'W x 9'D (6.7m x 2.7m)

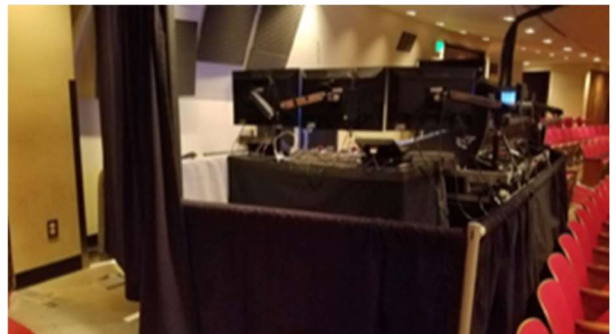
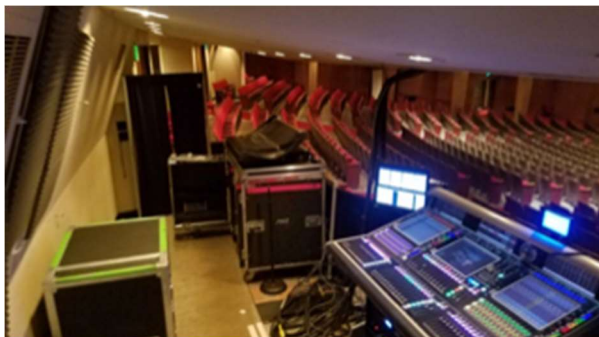
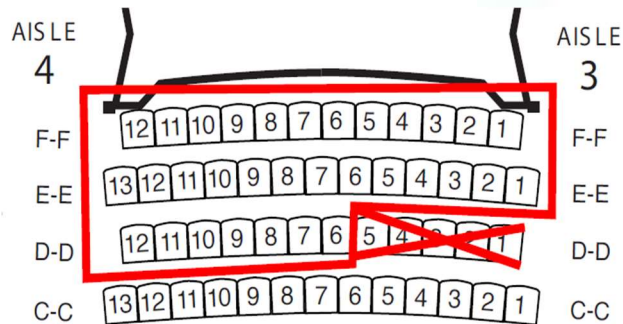
Sound is placed House Right and is approximately 11'W x 9'D (with a step down 4' from the back wall).

Lighting is placed House Left and is slightly smaller at approximately 10'W x 7'D.

Snake Runs

250' from SL/SR Wings or Sound Room/Dimmer Room. Fiber spools are run backward due to space constraint in pass through at House Sound Room. Path is via balcony rail and tied to ceiling at center.

Photos



Attachment H: Policies

Policies - General

House Opening: The house opens no less than thirty (30) minutes prior to scheduled show time. All set-up and sound checks must be completed by this time. House Manager approval must be obtained before starting or resuming a performance.

Typical curtain times in Portland are between 7pm – 8pm for evening shows, and 2pm for matinees.

Personnel Access: The visiting company will provide identification and/or complete lists of all persons to be allowed in the backstage area. This list must be provided a minimum of 48 hours prior to the beginning of the load-in and is subject to approval by the Production Department. Portland's reserves the right to restrict backstage access. All persons must sign in or show identification at the stage door.

Fire Exits: The visiting company will not obstruct any portion of the entries, hallways, elevators, stairs, or other egress, including access to all building utilities.

Signs and Decorations: Signs or decorations will not be placed in any rooms, hallways, lobbies or theaters in the Portland's buildings without the permission of the Event and Production Services Department. Damage may result in additional charges.

No sign or decoration is allowed on the building exterior or sidewalk, unless approved in advance by the Event and Production Services Department.

Smoking: Per Oregon State law and Metro policy, smoking and vaping are not permitted inside any Portland's venue, or within 25 feet of any exterior doorway or air intake. Theatrical use guidelines are listed in the **Smoking on Stage** section below.

Alcohol: All alcohol backstage must be provided and served by an OLCC licensed and permitted entity, approved and coordinated in advance with Production Department. Alcohol brought into the building by individual performers, cast or crew is prohibited.

Catering: Back of House - Clients may bring any caterer of their choosing in for backstage catering. All catering details to be advanced through the Production Department. A facility maintenance fee applies per event for this service.

Front of House- Levy is the exclusive Front of House caterer and concessionaire in all Portland's venues.

Animals: Only service animals are allowed in Portland's buildings. Use of animals in a production or related promotional event requires approval by the Production Department prior to load-in.

Security: Portland's reserves the right to determine the need for and engage uniformed (MERC) or non-uniformed (PEER) security personnel for each event, including FOH, exterior, onstage and backstage areas.

Firearms: Firearms are not permitted in public buildings except under limited circumstances including possession of a concealed weapons permit. While Portland's cannot ban those with concealed weapons permits from carrying firearms into a public building, the event Licensee, as a private entity, may choose to ban any weapons from the premises.

Policies - Production

Pre-Production Coordination: All advance work between the visiting company and Portland's Stagehand Department Heads will be done through the Production Supervisors.

Stage Labor: The Portland's Production Department reserves the right to determine the number and type of stage labor required for the event. All stage labor personnel are subject to the approval of the Production Department.

Seat Kills: Seat kills for production control equipment must be approved in advance by the Production & Ticket Services Departments. The use and ticketing of pit seats must be approved in advance by the Production & Ticket Services Departments.

Rigging Changes and Flying Effects: Any changes to house rigging or equipment, including flying effects, must be approved in advance by the Production Department.

Sound Level Limitations: Portland's Event and Production Services Department reserves the right to determine the maximum sound level for any event. Maximum dB level before incurring premium rates for stagehand labor is 112dB.

Holes and Attachments: The visiting company will not use any tape, or make holes, drive nails, tacks, stage screws or similar articles in any part of the premises without approval by the Production Department.

Valuables: Locking drawers are available in each dressing room. Keys may be signed out by the Stage Manager or other representative. No additional locks will be permitted on any door of the premises. It is recommended that valuables be collected by the visiting company's Stage Manager prior to the performance and kept until the performance is completed. Portland's assumes no responsibility for valuables or personal property left in dressing rooms.

Fire, Flame, and Pyrotechnics: All use of fire, flame, and pyrotechnics must be approved in advance by the Production Department, the City of Portland Fire Marshal, and, when appropriate, the State of Oregon Fire Marshal. This includes the use of candles, incense, lighters, torches of any kind, flash paper, etc. Visiting companies must be prepared to demonstrate effects to the Fire Marshal prior to approval. A Conditional Use Permit, which takes a minimum of three weeks to process, is required. All permit fees will be charged at the applicable rates.

Atmospherics, Strobes, and Sound Effects: The use of any special effects which may affect audience comfort or safety such as the use of lasers, strobe lights, haze, smoke effects, or gunshot sounds must be approved in advance by the Event and Production Services Department. Portland's reserves the right to limit or prohibit the use of effects which may constitute a hazard to patrons, employees or the facility.

Smoking on Stage: The State of Oregon prohibits the smoking of all tobacco products on stage. This ban includes vaping. Performers are allowed to smoke or carry a lighted smoking instrument that does not contain tobacco in scripted stage, motion picture, or television productions if smoking is an integral part of the production. A Conditional Use Permit, which can be coordinated through the Production Department, is required.

Weapons: Stage-use weapons with appropriate safety features may be permitted, only with prior approval by the Event and Production Services Department. A Conditional Use Permit may be required.

**All OSHA Regulations, Manufacturer's Specifications, and Theatrical
Safety best practices must be followed in Portland's venues.**